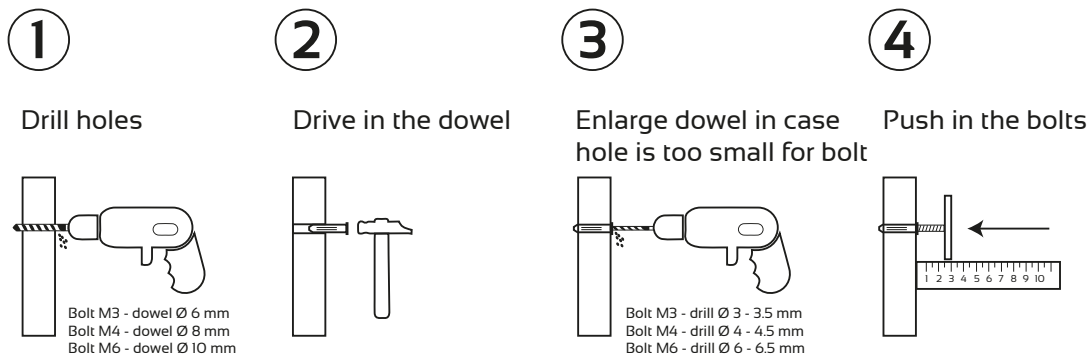


Instructions for Mounting with Bolts

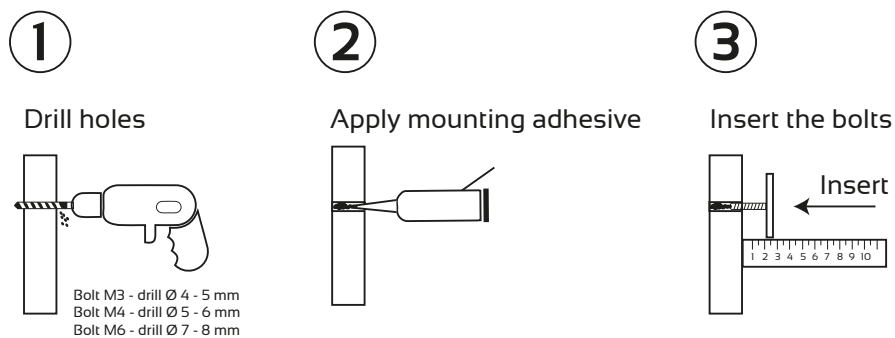
Mounting with bolts and dowels

Suitable for plasterboard, Walls with panelling (wood, stone etc.) as well as brittle brickwork



Mounting with bolts only

Suitable for firm brickwork as well as hard surfaces like natural stone and concrete



Mounting with bolts and threaded nuts

Suitable for surfaces that are accessible from the back

